



WOMEN CREW NECK SWEATSHIRTS
SXI92 - STELLA CROPSTER



The women's cropped crew neck sweatshirt

Medium Fit

- Set-in sleeve
- 1x1 rib at neck collar, sleeve hem and bottom hem
- Inside herringbone back tape
- Self fabric half moon at back neck
- Twin needle topstitch on all seams

Combo options



Stella Cropster Wave Terry

WHITES



WHITE

COLORS



BUTTER BLACK SERENE BLUE FRENCH NAVY ORCHID FLOWER

ESSENTIAL

HEATHERS



HEATHER GREY

Shell : Terry Sweatshirt , 85% Organic ring-spun combed cotton , 15% Recycled polyester , Fabric washed , Light sueded , 300 GSM

Printing Specifications

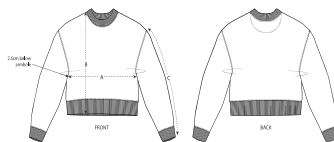
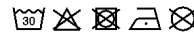
For suitable print techniques, please download our printing guide

Certifications & memberships



Wash Instructions

Wash similar colours together, no ironing on print, wash and iron inside out.



SIZES		XS	S	M	L	XL	XXL
A	Half Chest	47.5	50	53	56	59	62
B	Body Length	49.5	51.5	53.5	55.5	56.5	57.5
C	Sleeve Length	50	50	51	51.5	52	52