

## PR683 'Blossom' Beauty and Spa Tunic

### Description

Premier's 'Blossom' beauty and spa tunic has a feature button front fastening with a concealed zip. The short sleeves and princess seams along with side vents and a black pleat make for a practical garment that is easy to work in whilst retaining style.

### Product Features:

- Flattering feminine fit with bust and back darts
- Mandarin collar
- Concealed zip through fastening and press stud
- Back pleat for ease of movement
- Princess seams

### Available In:

6, 8, 10, 12, 14, 16, 18, 20, 22, 24

### Certifications:

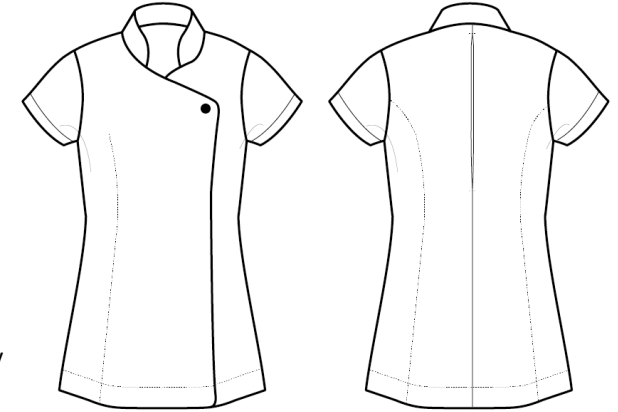


### Colours:

Colour	Pantone	C	M	Y	K
Black	Black c	0	0	0	100
Dark Grey	425c	52	29	30	78
Hot Pink	215c	66	100	26	24
Navy	533c	95	72	15	67
Purple	7447c	77	85	6	18
Strawberry Red	199c	0	100	72	0
White	White	0	0	0	0

### Fabric:

100% Polyester plain weave, 185gsm.



### Suggested Decoration:

Screen Print, Transfer Print, Embroidery

### Country of Origin:

China

### Commodity Code:

6211 43 1000

### Features:



### Wash Care:



### Carton Information:

Sizes	Carton	Pack	SKU's	Carton Weight	Carton Dimensions
All Sizes	12	3	70	6.2kg approx.	60cmx44cmx17cm

### Garment Sizes:

Size	6	8	10	12	14	16	18	20	22	24
Bust to fit"	31	33	35	37	39	41	43	45	47	49
Bust to fit cm	79	84	89	94	99	104	109	114	119	124
Bust actual cm	89	94	99	104	109	114	120	126	132	138
Coll size	2XS	XS	S	M	L	XL	2XL	3XL	4XL	5XL
Back length cm	70	71	72	72	73	74	75	76	77	78