




# B&C AIR - JU 801

## LIGHT WEIGHT JACKET / WITH LINING



### The windbreaker with lining

-  **OUT:** 100% nylon taffeta
- IN:** Body lining: 100% polyester mesh  
Sleeve lining: 100% polyester taffeta
-  S - M - L - XL - 2XL - 3XL\*
-  5 pcs/pack & 30 pcs/carton

\* ONLY AVAILABLE IN BLACK, NAVY AND RED



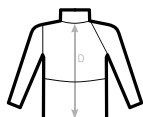
\* COLOURS AVAILABLE IN 3XL

-  Windproof
-  Showerproof
-  Water-repellent

- Adjustable storm hood concealed in collar
- Standing collar for great protection
- Front zip opening with zip pull
- Elasticated cuffs
- Adjustable bottom hem with drawcord
- 2 front pockets with zips
- Fold-away jacket (K-Way® system) in right pocket with double slider zip



C2= RAGLAN



### SIZES [CM]

B&C AIR JU 801	XS	S	M	L	XL	2XL	3XL
A HALF CHEST	-	59	64	69	74	79	84
B BODY LENGTH FROM NECK POINT	-	72	75	78	81	84	87
C SLEEVE LENGTH	-	55,5	57	58,5	60	61,5	63
D CENTER BACK LENGTH	-	71	74	77	80	83	86

B&C  
COLLECTION  
**OUTER  
WEAR  
/UNIT**