




B&C SIROCCO - JU 800

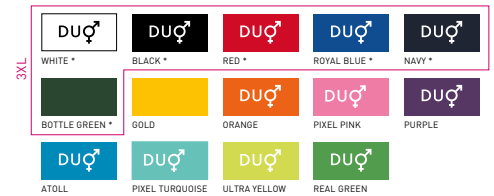
LIGHT WEIGHT JACKET / WITHOUT LINING






The Market Reference Windbreaker

-  100% nylon taffeta
-  S - M - L - XL - 2XL - 3XL*
-  10 pcs/pack & 50 pcs/carton

* ONLY AVAILABLE IN WHITE, BLACK, NAVY, RED, ROYAL BLUE AND BOTTLE GREEN



* COLOURS AVAILABLE IN 3XL

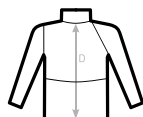
-  Windproof
-  Water-repellent
-  Showerproof

- Full zip opening with zip pull
- Adjustable storm hood concealed inside the collar
- 1 front pocket
- Fold-away jacket (K-way® system) in pocket with double slider zip
- Adjustable bottom hem with drawcord



DUO
CONCEPT

with B&C Sirocco /women
EXISTS IN B&C SIROCCO /KIDS



SIZES [CM]

B&C SIROCCO JU 800	XS	S	M	L	XL	2XL	3XL
A HALF CHEST	-	59	64	69	74	79	84
B BODY LENGTH FROM NECK POINT	-	72	75	78	81	84	87
C SLEEVE LENGTH	-	55,5	57	58,5	60	61,5	63
D CENTER BACK LENGTH	-	71	74	77	80	83	86

B&C
COLLECTION
**OUTER
WEAR
/UNIT**